



Anyone conducting connection-branch repair knows the challenge: To be prepared for all contingencies of connection-repair, one would have to keep countless cap profiles and sleeves in stock. This is about to change – with the **lineTEC Universal TY-Liner!**

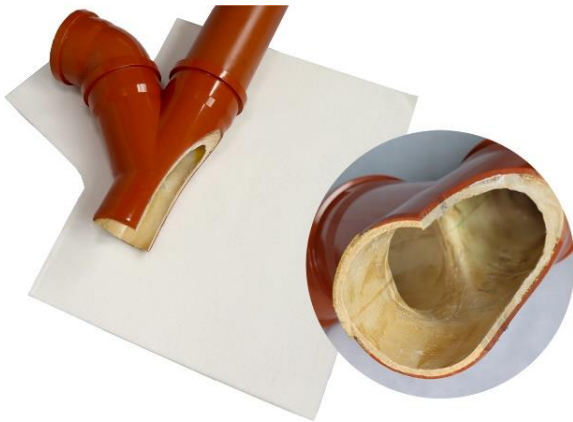
Innovation In Design

Flex base-material, not fully-sewn 67° nozzle

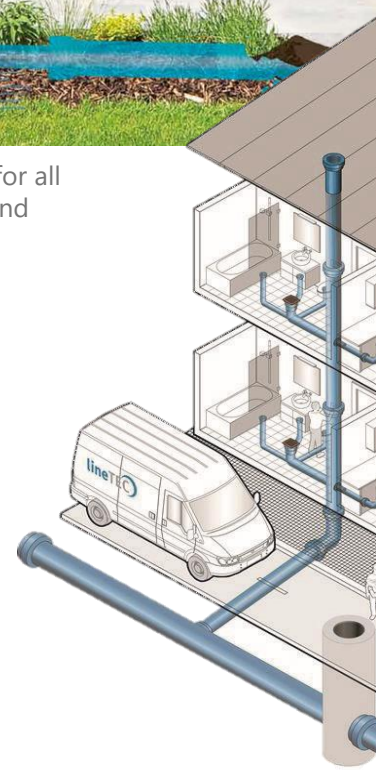
- Connection repair in nozzle-angles from 45° to 90°
- Optimal adjustment – even with imprecise positioning
- Significantly reduced risk of wrinkles

Extra wide, customizable brim

- Pipe-enclosing rehabilitation possible up to DN 250
- > DN 250 open brim with large surface for gluing
- < DN 500 abutment to prevent the cuff from being flushed out
- Can be used with all commercially available setting tools



You want to learn more? For more information, visit www.vfg-linetec.com or contact us directly!



Lower warehouse expenses

Only 9 cuff-types to handle almost all connection-repair situations

lineTEC Universal TY-Liner Flex

- 2,5 mm final wall thickness*
- Nozzle in DN 50 – DN 150
- Brim for main pipe in DN 70 – DN 150+

lineTEC Universal TY-Liner ProFlex

- 3,5 mm final wall thickness *
- Nozzle in DN 100 – DN 250
- Brim for main pipe in DN 100 – DN 250+